

Increase net profit by up to

5m€

Reduce data processing by up to

80%

#knowing water

#leaugiciel

usseur
& **vic**

Informed intelligence for water networks.



Agile operations for Smart Cities.

Operational Management

Smart and innovative software delivering significant gains in operational efficiency and quality control.



Up to 80% Reduction

Read the justification here:
www.ausseurvic.com/intelligence-study.html

The complete management of your WATER infrastructure, process or territory, through single, customised, collaborative and fully mobile system

From the production process to the large-scale infrastructures. The entire operational management in a single system.

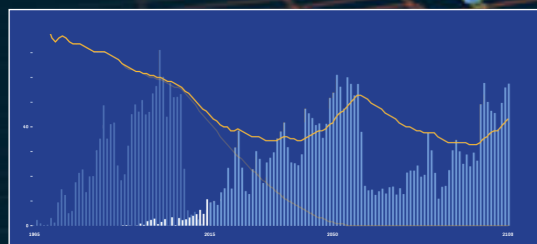
Agile operations for smart cities: All the operations of the city in a single complete management solution.

The software is an intelligent operational tool adaptable to the size of any water network. Thanks to its fully flexible concept, the tool is entirely modelled to your infrastructure, in size and type of operation. Including your own management model.

As a completely configurable solution, it is directly customisable with all the processes, settings, indicators, teams, tasks, equipment type and policies of your company. As a collaborative system, it will enable information to flow across your organisation promoting best-practices, acquiring and saving precious know-how and enabling an effective and efficient management of the infrastructure.

It has been designed to continuously, systematically and simultaneously analyse all the actions that are taking place in your enterprise, identifying alarms, distributing tasks, setting schedules while being a completely dynamic application fit for your office teams as well as your mobile staff in the field.

Take decisions that increase productivity and service quality.



Knowing is a lot better than believing.

Baseform

Asset Management & Investment

Baseform - Non-intrusive intelligent tool for water networks design for utilities with a future.



Up to 5m€ increased profits

Read the justification here:
www.ausseurvic.com/intelligence-study.html

Managing water infrastructures is all about understanding people's behaviour, the natural resource and having a real picture of your asset.

By capitalising your past and current data, you will shape a lasting long-term vision that will drive the good management of your patrimony providing excellent durable service to people.

Baseform is a SaaS intelligent tool designed to monitor, diagnose, predict, plan and optimise water networks.

This intelligent tool makes available a growing family of apps that learns with each customer deployment. These "Apps" bring together sets of tools that leverage their combined functionality around a specific decisional or engineering process. The platform ensures a consistent user experience and a natural integration of data & results.

As sensors multiply, this intelligent game-changing tool combines data sources like never before, to reach a much better understanding of human behaviors and levels of activity around your networks, throughout the day and the year.

Among other values it is designed to significantly improve drinking water networks' performances. Detect and managed infiltrations and inflows in sewage systems. Simulate sustaining scenarios for ailing infrastructures. Prioritise and project costs of water policies. Keep track of your financials on a complex and evolving environment.

Having a team of water experts on the tip of your fingers.

Metrology from JANZ

RESIDENTIAL / COMMERCIAL



JV400

- Volumetric Brass R800* water meter
- DN15 L110 and Coaxial up to DN40 L300
- IP68 extra-dry Copper-Glass register



JV600

- Volumetric Composite R800* water meter
- DN15 L110 up to DN25 L260
- IP68 extra-dry Copper-Glass register

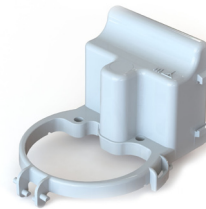
COMMERCIAL & INDUSTRIAL



JU500

- Static Ultrasonic U0D0 R500* Bulk water meter
 - DN50 L200 up to DN150 L300 Cast iron epoxy painted body
 - Embedded communication protocols with battery 10 year life-time*
- *option for 20 year battery

COMMUNICATION



JR

- Compact Radio Module fitting all meter sizes
- "Class 0" bi-directional Sigfox LPWAN protocol
- Up to 96 volume readings per day allowing load profiling
- Better network knowledge, lower network costs, faster set-up time

*Metrology instruments are certified according to the latest EU Measuring Instruments Directive 2014/32/EU - translated into the norms EN14154, EN4064 and OIMLR49. All instruments carry an ACS certificate. Other mechanical metering devices available specific for the allocation or billing purposes ranging from DN15 to DN50 and R80 to R200

Counselling

Ausseur & ViC believes that astute insights are the combined result of a vision, of extraordinary efforts, of the respect for details and of the passion for principles. When presented with a challenge, we work to provide clear, independent answers. And we stand behind them, because inconvenient truths are better than false comforts.

Business

We assist corporations in strategic business choices involving tactical industry plans, company re-organisations, major project implementations and inspiring marketing campaigns.

Technology

We provide consultancy in technology developments and technology excelling projects where innovative views are a necessity to surpass the traditional use of common practices and achieve unparalleled product value.

Knowledge

We deliver on-demand training sessions covering technology trends, market legal related subjects and assistance when dealing with international expansion challenges such as cultural loopholes.



Ausseur & ViC SAS
16 Rue de Luyzine
69720 St Bonnet de Mure
France

+33 782 208 294

info@ausseurvic.com
www.ausseurvic.com

