

# WATER METERS/ MONO-JET

**JANZ** LEADING THE  
WATER FUTURE



# COMBI

## MONO-JET METER FOR CLEAN WATER

DN13 to DN20  
(Q3 2,5 to Q3 4 M3/h)

UP to R?

T30 | T50

MAP 10 | MAP 16

MID approved

IoT Ready

Pattern approval according to the most demanding accuracy levels of the OIML-R49;

For domestic consumption measurement;

Recommended for plumbing with high level of floating suspension particles;

Copper body with high resistance to corrosion.

# WATER METERS/ MONO-JET



## COMBI OFFERS

- ✓ An accurate reading due to the magnetic transmission being independent of water pressure;
- ✓ Tamper proof.  
The regulation system is hidden under the roller counter unit thus is not reachable from outside;
- ✓ Materials consciously selected to be resistant to corrosion and hydrolysis;
- ✓ IoT Ready. COMBI has inductive pulse output. that can be equipped with any pulse sensor (ex: JANZ JI for direct coupling) or LPWA sensors such as MYWATER.

## OPERATIONAL CHARACTERISTICS:

**Maximum Admissible Pressure (BAR) :** MAP 10 | MAP 16

**Temperature Class:** T30 | T50

**Ratio Q3/Q1:** R200

**Pressure Loss-Class:**  $\Delta P$  63

**Installation Position:** H | V

**Flow Profile Sensivity Classes:** U0D0

**Indicating Range (M3):** 99 999

**Resolution of the indicating device: (L):** 0,05

**Body :** Brass

**Ec Type Examination:** TCM 142/13 - 5128 in accordance with Directive 2014/32/EU (new MID), ISO 4064:2014 and Directive 2004/22/EC (MID), EN14154:2005+A1:2007.

# WATER METERS/

## MONO-JET



### TECHNOLOGY

COMBI was developed to accomplish the highest performance standards.

His great design and engineering along with highly detailed raw materials selection criteria guarantees the ideal compromise between sensibility and durability.

» The **Body** is made of hot stamped high quality brass with a stainless steel bearing pin pressed in. A chromed plated version of the body is available on request.

» The **Turbine** is the only moving part in contact with water. A sapphire ball on its top allows a better durability and a higher accuracy of the measurement.

» The **Indicator Device** with no gears inside water it has big rollers with great contrast . To obtain a comfortable reading position a 359° rotation is possible as well as an 45° register. To prevent water condensation COMBI's indicator device is sealed by ultrasounds welding (IP68).

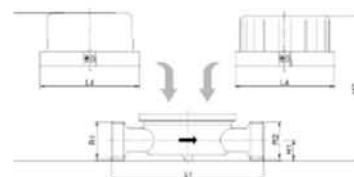
» **Pulse Output:** COMBI is equipped with an Inductive pulse output (1pulse = 1 lt). Ready for the most advanced technologies such as IoT (Internet of things)

### TECHNICAL DATA

Nominal Diameter	DN	mm	13	15	20
Nominal flowrate	Q3	(m3/h)	2,5	2,5	4
Ratio "R"	Q3/Q		Ratio 100H e 50V		
Maximum flowrate	Q4	(m3/h)	3,13	3	
Transitional flowrate (+/- 2%precision)	Q2	(l/h)	40	40	64
Minimal flowrate (+/- 5% precision)	Q2	(l/h)	40	40	64
Start flow		(l/h)	6	6	11
Nominal Pressure	PN		16	16	16

### DIMENSIONS

Nominal Diameter	DN	mm	13	15	20
Lenght L1		mm	100 ou 115	110 ou 115	115 ou 130
Height H1		mm	14	14	16,5
Height H2		mm	63	63	65,5
Weight		kg	0,426	0,410	0,469
Indications	Verification	dm3	0,426	0,410	0,469
	Dimension maximum reading	m3	99.999	99.999	99.999
CE Certification	TCM 142/13-5128				

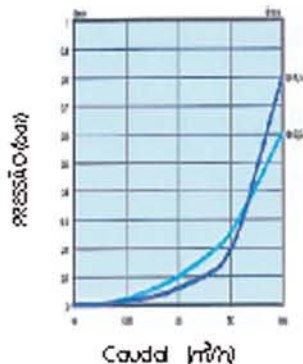


CERTIFICATE N. 95/CEP/341

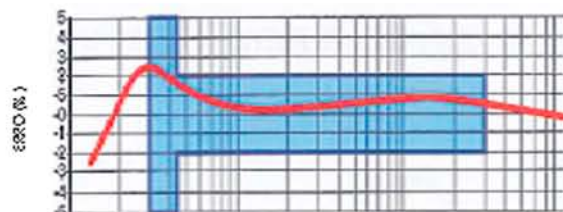
# WATER METERS/ MONO-JET



## HEAD LOSS



## TYPICAL CURVE ERROR



## OPTIONS

### COMBI CAN BE EQUIPPED WITH ADVANCED TECHNOLOGIES:

- » JANZ JI Inductive pulse sensor (or any other similar product)
- » LPWA Telemetry System MYWATER (or any other similar product)



## EXTRA DRY

For extreme applications including extended submersion a Super Dry copper-glass can version is available.



**JANZ** LEADING THE WATER FUTURE

For more information, please contact:



AV. INFANTE D. HENRIQUE, 288  
1950-421 LISBOA/ PORTUGAL  
T. (+351) 218 316 000

geral@cgf.janz.pt  
[www.cgf.janz.pt](http://www.cgf.janz.pt)